

BUFFALO OUTER HARBOR ACCESS & ACTIVATION PROJECT

LEARN MORE ABOUT THE PROJECT

Where is the project located?

What areas are included?



Three project sites are being considered. They include:

Station 1

**First Buffalo River
Marina**

Lead Consultant:

OLIN

Station 2

**Wilkeson Pointe
to Bell Slip**

Lead Consultant:

TWMA

Station 3

Terminal B

Lead Consultant:

B

Visit each station to share **your** ideas with us!

BUFFALO OUTER HARBOR ACCESS & ACTIVATION PROJECT MEETING PURPOSE



Tell us about your ideas for the Outer Harbor...

We want to hear from you!

TIMELINE

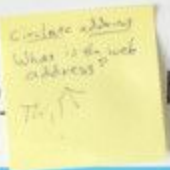
- June 2018**
Consultant Team Kickoff
- July 11, 2018**
Meeting One: Gather Community Input & Ideas for Desired Uses & Activities
- November 2018**
Meeting Two: Present Project Alternatives
- February 2019**
Meeting Three: Present Preferred Alternative and Implementation Projects

PURPOSE

- Engage public & stakeholders in program development.
- Provide project background to help inform possible opportunities and constraints.
- Include the perspectives of the community at large and local agencies to inform and shape the project.
- Initiate a process that helps establish the community's vision for a successful project.

How can you communicate with the project team?

- Have your comments recorded at one of the stations
- Fill out the survey
- Go online to take the survey
- Stay informed through the project website



BUFFALO OUTER HARBOR ACCESS & ACTIVATION PROJECT

TELL US WHAT YOU THINK



What's the best **word** to describe the Outer Harbor new?

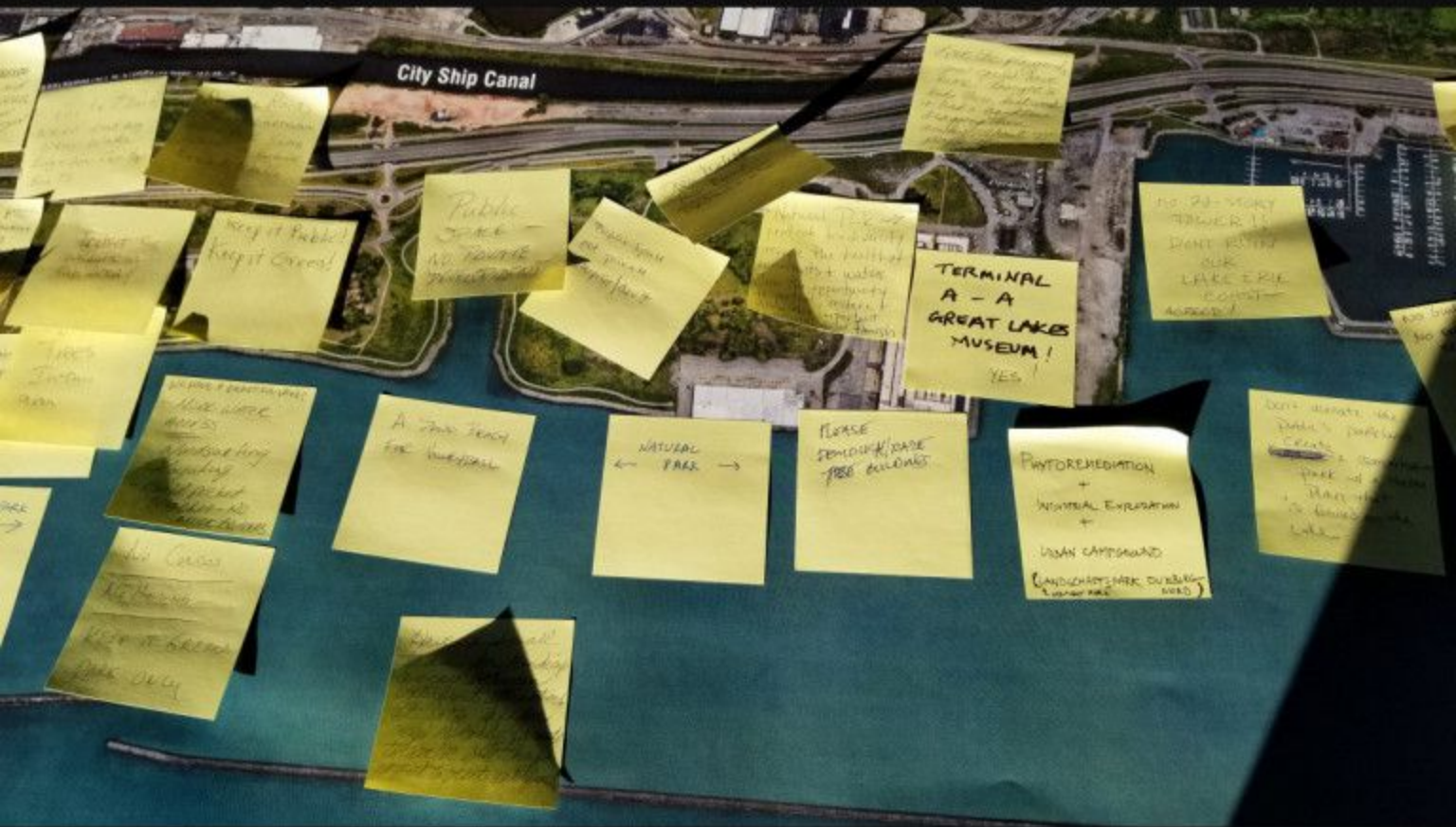
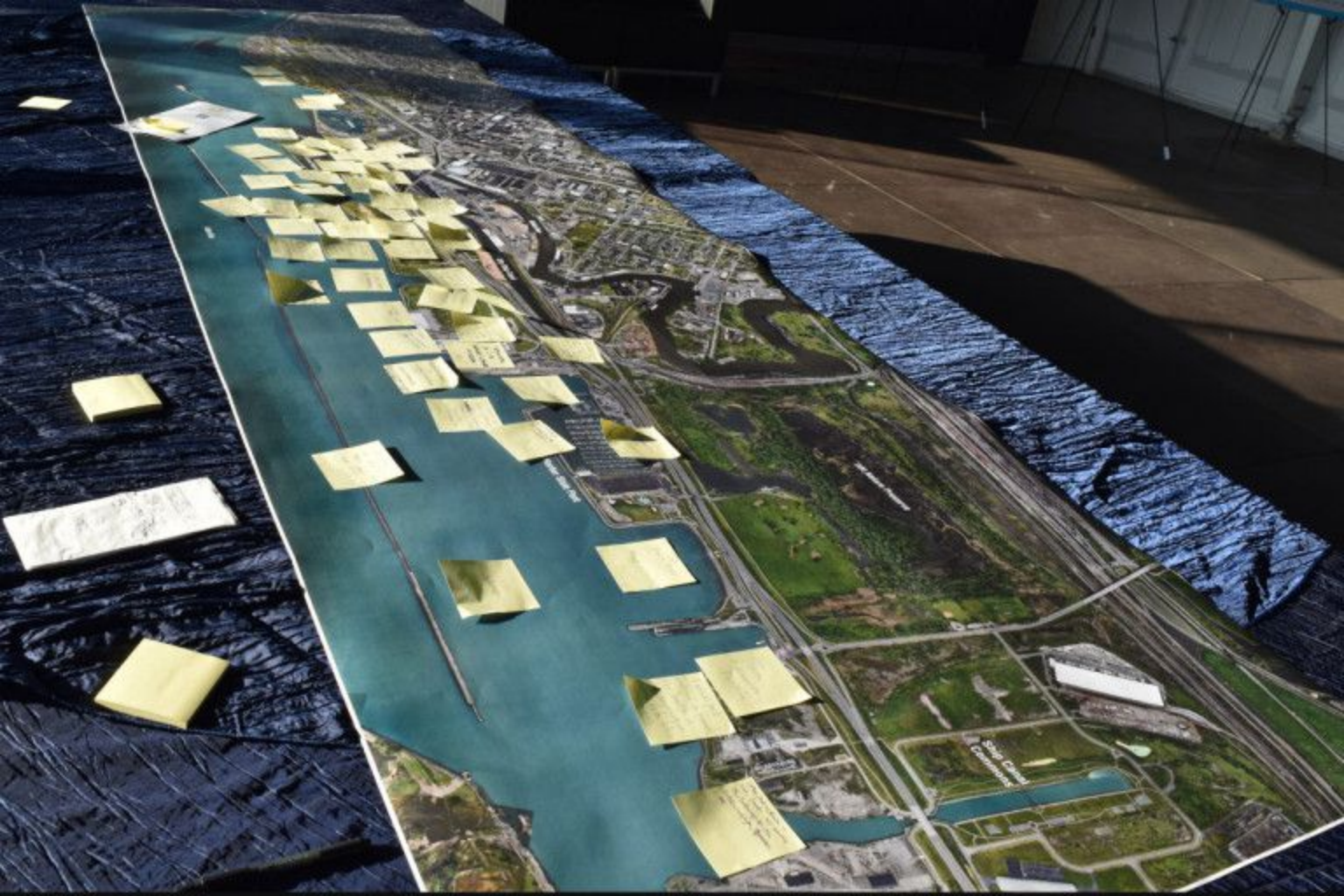
Handwritten responses on sticky notes:

- INACCESSIBLE
- Rejuvenating
- Have for a park, private, open place to be alone and quiet - or people that animals
- PUBLIC
- ACCESSIBLE
- Public and active story
- Opportunity
- * Global Highway that connects us to the Amazon + the Arctic poles.
- * Noah's Ark OF RARE plant fish + wildlife species...
- Our natural buffer zone from our industrial past.
- our air conditioner/heater/micro-climate-maker....
- Source of our drinking water + the water we depend on to live...
- RARE or BIODIVERSITY
- Former Racine Iconic tower (American many) as representative to OH.
- UNDEVELOPED
- MYSTICAL

What's the best **word** to describe the Outer Harbor you want?

Handwritten responses on sticky notes:

- ACCESSIBLE
- NATURAL PUBLIC PARK
- Biological Diverse
- Barney Island to protect city
- LEAVE ALONE!
- Tunnel Access of Bridge (North)
- Water Front Park
- Dike Ferry
- Trail access to South Lockwood Blosskill Hamburg
- mt. bike path should go on private land. Too much liability
- natural!
- world-class Olmstedian park
- Truly free!
- CAMPGROUND DO
- A DESTINATION BY BOAT
- Public & recreation public
- It should be a big PARK!
- Truly public, smart + ecologically strategic development
- NATURAL
- Buffalo's Front Yard



AREA 2 - OLD PIER RESTAURANT SITE

- ONE DESIGN SAILING CENTER FOR WORLD CLASS REGATTA; JIBING RACING DOCKS; 2 STORAGE OF SAILING EQUIPMENT
- 65-70 BAYS FOR HOIST (CM)
- PARKING; STORAGE
- DRAW CANADIAN SAILORS

NO

NO more development
Water byes
unintentional energy
1 Buffalo
JLD

NO! Not only the water
Leave it to Nature. Boats take up most of shoreline already they pollute!!!

More than known being
one what is WORLD class
not boaters!!

Maintain like
map

LOCK - THIS

INTRODUCE A FARMERS MARKET AREA

SLIP 2

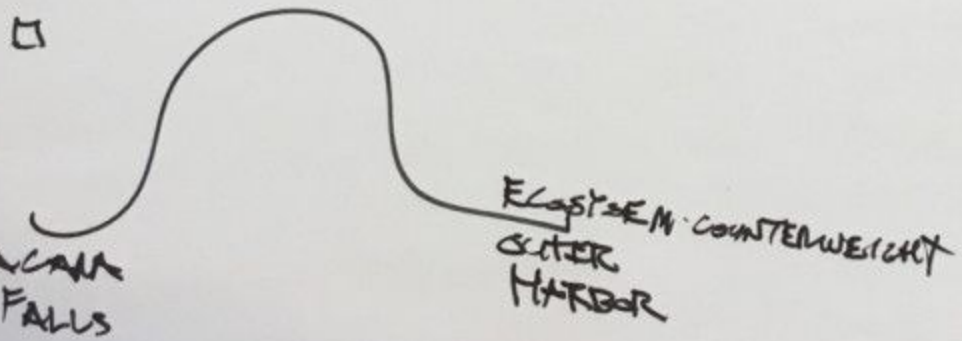
- TRANSIENT DOCKING } NEED UTIL BAT
- ACCOMMODATE A RANGE OF SIZES
- CRUISE SHIP DOCKING } NO

ANTIQUE BOAT

INCREASE ACCESS TO WATER

NO

SHUTTLE / CONNECT MODES: KAYAK TO BIKE TO...
IDEA OF NATIONAL ^{SEA} SHORE ALA GREAT LAKES
NATIONAL SEASHORE



CONNECT DEAD END BIKE TRAIL ON EAST SIDE FURMAN W/ WEST SIDE

NEED RESTROOMS + DRINKING FOUNTAINS

LIMIT CONCERTS — MORE NATURE!

NEED MORE HC PARKING @ WILKESON POINTE &
FOR KAYAK LAUNCHING

SOUTHERN ANCHOR FOR NIAGARA RIVER GREENWAY
NATIONAL GATEWAY RECREATION AREA (OR INTERNATIONAL

W/CANADA) (JIM CARR)

NOT LOCAL → BIGGER THAN THAT

TERMINAL A — COULD BE NAUT PIER

DON'T LIMIT VISION — BIG THINGS ARE
POSSIBLE